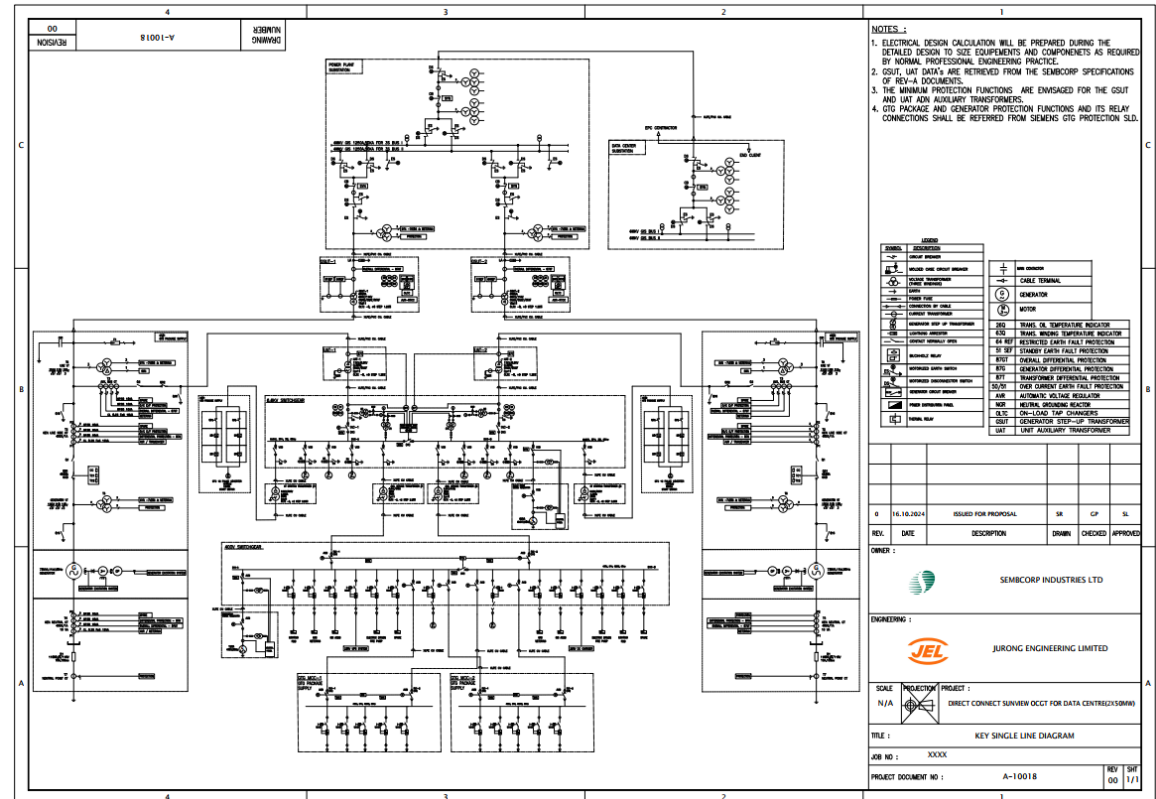


Project: PLP (2 x 57 MW Open Cycle Gas Turbine (OCGT))

- **Key single line diagram**
- **Piping and instrumentation diagram**
- **BOM - Bill Of Material**

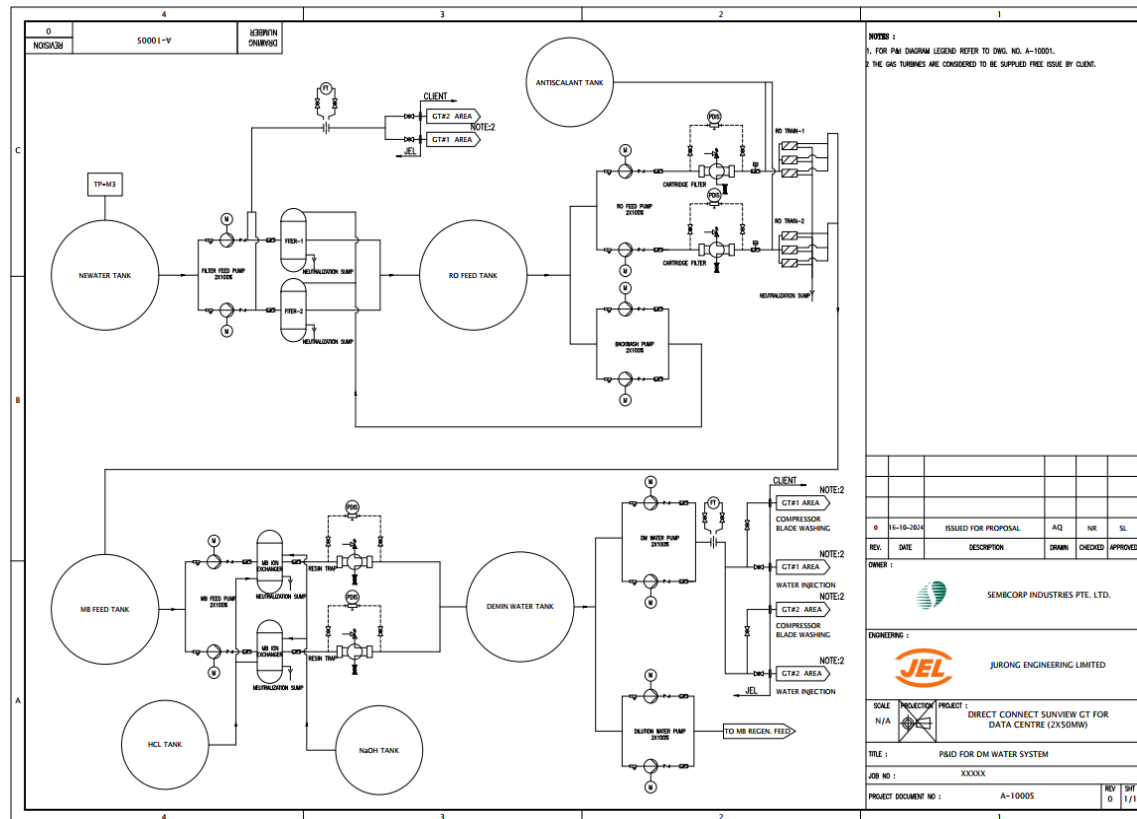


Key Single Line Diagram

Pre-Bid Engineering Support Services for 2 X 57 MW OCGT

Client: M/s Jurong Engineering Limited (JEL)

Project: PLP (2 x 57 MW Open Cycle Gas Turbine (OCGT))

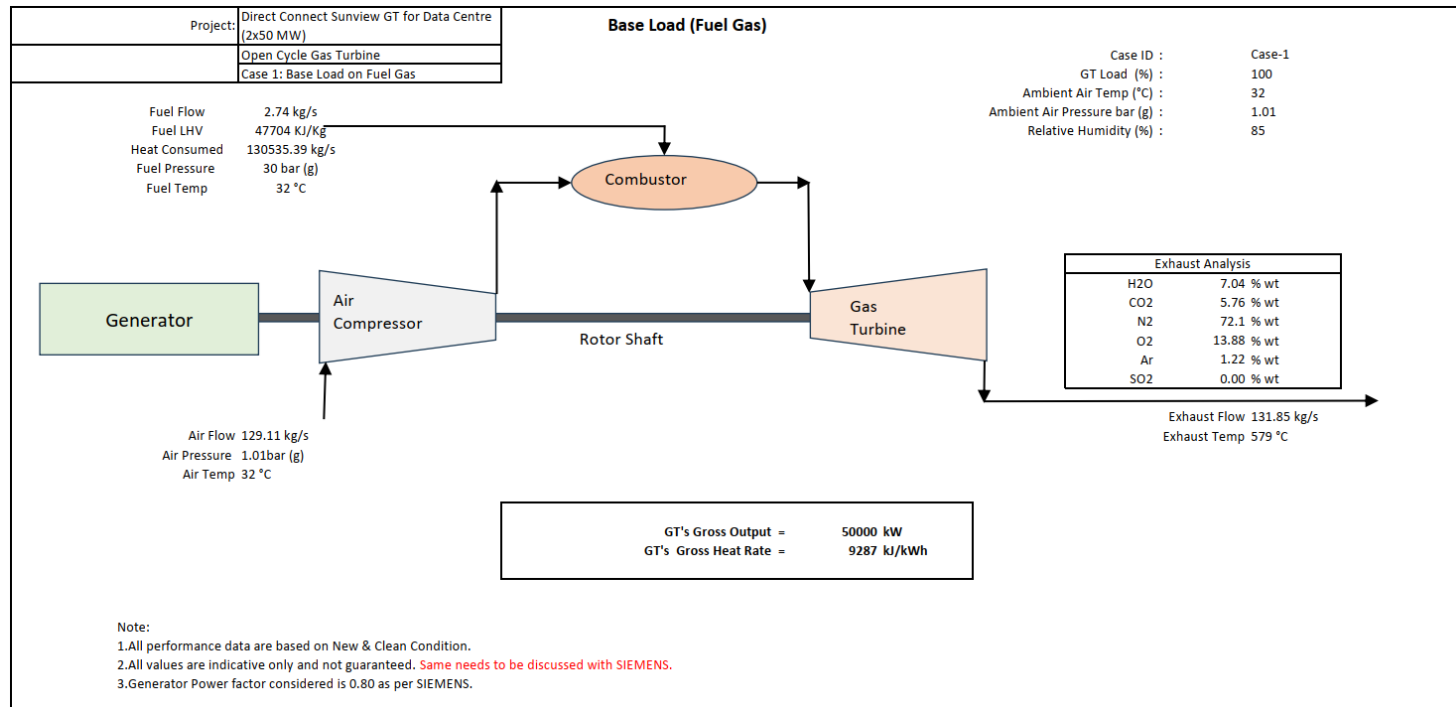


P&ID of DM Water System

Pre-Bid Engineering Support Services for 2 X 57 MW OCGT

Client: M/s Jurong Engineering Limited (JEL)

Project: PLP (2 x 57 MW Open Cycle Gas Turbine (OCGT))





Heat and Mass Balance Diagram

Pre-Bid Engineering Support Services for 2 X 57 MW OCGT

Client: M/s Jurong Engineering Limited (JEL)

Project: PLP (2 x 57 MW Open Cycle Gas Turbine (OCGT))

<div>  <div> Project: Direct Connect Sunview GT for Data Centre (2x50MW) Document Name: Equipment Datasheet Document Number: XXXX </div>  </div>					
SLNo	Description	Unit	Data	Indicative Price (SGD)	Remarks
1	Equipment : Air Compressor			295,000 SGD for 2x100% Air Compressor system	Based on Atlas Copco's final Quotation for PLP project for same technical parameters.
2	Location	-	Outdoor		
3	Type	-	Oil free- Screw type		
4	Model	-	Later		
5	Number and Duty	-	2 X 100%		
6	Capacity	m3/min	4.8		
7	Pressure Maximum	bar (g)	10		
8	Motor Rated Output	kW	45		
9	Dryer outlet Air dew point	°C	-20		
10	Instrument Air				
11	Partical Size (Max)	µm	1		
12	Oil content	mg / Nm3	0.1		
13	Air Receiver Capacity (Main)	m3	8		
14	Air Receiver Capacity (Main)	Nos	1		
15	Service Air				
16	Partical Size	µm	Later		
17	Oil content	mg / Nm3	Later		
18	Air Receiver	m3	2		
19	Air Receiver Quantity	Nos	1		
20	Equipment : Fuel Oil Forwarding Pump			Please refer the attached KSB vendor offer received for PLP project. We do not have the prices since JEL has blocked the values. You may get the priced offer from JEL procurement.	Based on KSB's Quotation for PLP project for slightly higher technical parameters.
21	Location	-	Outdoor		
22	Type	-	Centrifugal type		
23	Model	-	Later		
24	Number and Duty	-	2 X 100%		
25	Capacity	m3/hr	30		
26	Rated Head	m	Later		
27	Fluid Temperture	°C	32		
28	Fluid Density	kg/m3	865.4		
29	Motor Rated Output	kW	Later		
30	Equipment : CEMS			Please refer the attached SICK vendor offer for PLP project. We do not have the prices since JEL has blocked the values. You may get the priced offer from JEL procurement. You may add 10 to 15% more to this price since Semcorp has asked for additional measurements.	Based on SICK's final Quotation for PLP project for same technical parameters.
31	SO2 Measuring Range	mg/Nm3	0 – 100		
32	Nox Measuring Range	mg/Nm3	0 – 200		
33	CO Measuring Range	mg/Nm3	0 – 250		
34	CO2 Measuring Range	%	0 – 25		
35	Temperature	°C	650		